

**NOXIOUS WEED NOTICE  
TOWN OF JACKSON**

Every person is required by law to destroy all of the following noxious weeds as defined by Section 66.0407 of the Wisconsin Statutes on lands in the Town of Jackson, Washington County, Wisconsin, which the person owns, occupies or controls.

1. Canadian Thistle
2. Leafy Spurge
3. Field Bindweed
4. Burdock
5. Garlic Mustard
6. Any weed designated as a noxious weed by the Department of Natural Resources by rule, and any other weed the Town Board of the Town of Jackson or the County Board of Washington County by ordinance or resolution declares to be noxious within its respective boundaries.

Dated this 1st day of May 2017.

Julia Oliver  
Town Clerk

*If you have a noxious weed question, concern or complaint please contact the Clerk's office. Residents must complete a complaint form identifying the location of the noxious weeds. Once completed complaint forms are forwarded to Town Supervisor/Weed Commissioner Marcy Bishop for follow up.*

**AFFIDAVIT OF POSTING:** I hereby certify that this notice has been posted on the Town of Jackson website at [www.town-jackson.com](http://www.town-jackson.com) and at the Town of Jackson Town Hall, 3146 Division Road. As a courtesy the notice may be posted at the Town Garage, 3685 Division Road, Jackson, and/or the posting board at Trinity Lutheran Church, 1268 Pleasant Valley Road, West Bend.

Julia Oliver, Town Clerk  
Town of Jackson

Class 2:

Posting #1 \_\_\_\_\_

Posting #2 \_\_\_\_\_



[Home](#) | [About PLANTS](#) | [Team](#) | [Partners](#) | [What's New](#) | [NPDT](#) | [Help](#) | [Contact Us](#)

You are here: [Home](#) / Plant Profile

[GENERAL](#) | [IMAGES](#) | [SYNONYMS](#) | [CLASSIFICATION](#) | [LEGAL STATUS](#)  
[WETLAND](#) | [RELATED LINKS](#)

**Search**

Name Search

Scientific Name

- State Search
- Advanced Search
- Search Help

**PLANTS Topics**

- ▶ [Alternative Crops](#)
- ▶ [Characteristics](#)
- ▶ [Classification](#)
- ▶ [Cover Crops](#)
- ▶ [Culturally Significant](#)
- ▶ [Distribution Update](#)
- ▶ [Documentation](#)
- ▶ [Fact Sheets & Plant Guides](#)
- ▶ [Introduced, Invasive, and Noxious Plants](#)
- ▶ [Threatened & Endangered](#)
- ▶ [Wetland Indicator Status](#)

**Image Gallery**

- ▶ [50,000+ Plant Images](#)

**Download**

- ▶ [Complete PLANTS Checklist](#)
- ▶ [State PLANTS Checklist](#)
- ▶ [Advanced Search Download](#)
- ▶ [Symbols for Unknown Plants](#)
- ▶ [NRCS State GSAT Lists](#)
- ▶ [NRCS State Plants Lists](#)

**Related Tools**

- ▶ [Crop Nutrient Tool](#)
- ▶ [Ecological Site Information System](#)
- ▶ [PLANTS Identification Keys](#)
- ▶ [Plant Materials Web Site](#)
- ▶ [Plant Materials Publications](#)
- ▶ [USDA Plant Hardiness Map](#)

***Cirsium arvense* (L.) Scop.  
 Canada thistle**

[Show All](#)

click on a thumbnail to view an image, or see all the *Cirsium* thumbnails at the [Plants Gallery](#)



©Al Schneider. [Southwest Colorado Wildflowers](#). United States, CO, NM, AZ, UT, Four Corners vicinity, within 150 miles of the corners. [Usage Requirements](#).

# LEAFY SPURGE

*Euphorbia esula* L.

Plant Symbol = EUES

Contributed by: USDA NRCS Aberdeen, Idaho Plant Materials Center



Leafy spurge. William M. Ciesla, Forest Health Management International, Bugwood.org.

## Alternate Names

**Common Names:** wolf's milk, faitours-grass, tithymal  
**Scientific Names:** Considerable taxonomic confusion surrounds leafy spurge varieties, subspecies and hybrids. The PLANTS Database recognizes 2 varieties *Euphorbia esula* var. *esula*, and *Euphorbia esula* var. *uralensis* (= Russian leafy spurge)

**Caution: This plant is highly invasive.**  
**Caution: This plant can be toxic.**

## Uses

Leafy spurge is a noxious, introduced, aggressive invader plant that can overtake large areas, displace desirable plant communities, and reduce aesthetic and economic

values and wildlife habitat. Cattle and horses avoid leafy spurge. The milky sap, which contains ingenol, a toxic compound, can cause severe diarrhea and weakness in cattle and horses forced to consume it. Leafy spurge can also cause blistering and hair loss around horses' hooves and can be irritating to the skin, eyes and digestive tracts of humans and other animals. Sheep and goats tend to be less bothered by the toxic sap properties and are often used in concert with herbicides and other biological agents to manage heavy infestations of leafy spurge (Bourchier, et. al., 2006; Gucker, 2010).

Leafy spurge seed is consumed by mourning doves. The plant provides nesting habitat for western meadowlarks but are not utilized by other bird species (Gucker, 2010). Grasshopper sparrows and savannah sparrows have had their populations reduced in areas of heavy weed infestation. Leafy spurge reduces habitat for bison, deer, and elk and is a major threat to the endangered western prairie fringed orchid (*Platanthera praeclara*) because leafy spurge has established and spread into much of the only remaining suitable habitat of the orchid (Bourchier, et. al., 2006).

Although leafy spurge is an invasive plant and most efforts are to control or manage the plant, it has been evaluated for use as a biofuel, as an antiviral against herpes simplex and in China, as a dilution of boiled plant material to control maggots, mosquito larvae, rats, and some plant diseases (Gucker, 2010).

## Status

Leafy spurge is recognized as a noxious weed in Alaska, Arizona, California, Colorado, Connecticut, Hawaii, Idaho, Iowa, Kansas, Massachusetts, Minnesota, Montana, Nebraska, Nevada, New Mexico, North Dakota, Oregon, South Dakota, Utah, Washington, Wisconsin, and Wyoming.

Please consult the PLANTS Web site and your State Department of Natural Resources for this plant's current status (e.g., threatened or endangered species, state noxious status, and wetland indicator values).

## Weediness

Leafy spurge produces a prolific, and often deep, massive root system. It can produce abundant seed in the second and subsequent growing seasons. Seed is forcibly ejected from the plant when ripe and all animals that come in contact with the plant can disperse seed. Vehicles and road maintenance equipment can also disperse seed. Seed can also be spread by ants and by water as the seed can float and survive underwater storage (Gucker, 2010).



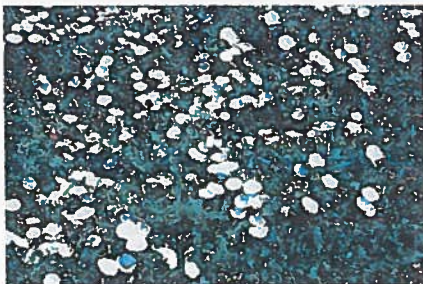
You are here: [Home](#) / [Image Gallery](#) / [Profile Page](#) / Large Image View of *Convolvulus arvensis* L. (field bindweed)

## Image Gallery

### Photo and Download Link

*Convolvulus arvensis* L. - field bindweed  
COAR4

Provided by Smithsonian Institution, Department of Botany. [Usage Requirements](#)



[Usage Requirements](#)

Time Generated: 04/10/2017 11:34 AM CDT

**Search**  
Name Search

Scientific Name

- State Search
- Advanced Search
- Search Help

**PLANTS Topics**

- Alternative Crops
- Characteristics
- Classification
- Cover Crops
- Culturally Significant
- Distribution Update
- Documentation
- Fact Sheets & Plant Guides
- Introduced, Invasive, and Noxious Plants
- Threatened & Endangered
- Wetland Indicator Status

**Image Gallery**

- 50,000+ Plant Images

**Download**

- Complete PLANTS Checklist
- State PLANTS Checklist
- Advanced Search Download
- Symbols for Unknown Plants
- NRCS State GSAT Lists
- NRCS State Plants Lists

**Related Tools**

- Crop Nutrient Tool
- Ecological Site Information System
- PLANTS Identification Keys
- Plant Materials Web Site
- Plant Materials Publications
- USDA Plant Hardiness Map



You are here: Home / Image Gallery / Profile Page / Large Image View of *Arctium minus* Bernh. (lesser burdock)

## Image Gallery

### Photo and Download Link

*Arctium minus* Bernh. - lesser burdock  
ARMI2

©W L. Wagner. Provided by Smithsonian Institution, Department of Botany. [Usage Requirements](#). Any use of copyrighted images requires permission of the copyright holder.



[Usage Requirements](#). Any use of copyrighted images requires permission of the copyright holder.

Time Generated: 04/10/2017 01:59 PM CDT

**Search**

Name Search  
garlic mustard  
Common Name [v] Go

- State Search
- Advanced Search
- Search Help

**PLANTS Topics**

- Alternative Crops
- Characteristics
- Classification
- Cover Crops
- Culturally Significant
- Distribution Update
- Documentation
- Fact Sheets & Plant Guides
- Introduced, Invasive, and Noxious Plants
- Threatened & Endangered
- Wetland Indicator Status

**Image Gallery**

- 50,000+ Plant Images

**Download**

- Complete PLANTS Checklist
- State PLANTS Checklist
- Advanced Search Download
- Symbols for Unknown Plants
- NRCS State GSAT Lists
- NRCS State Plants Lists

**Related Tools**

- Crop Nutrient Tool
- Ecological Site Information System
- PLANTS Identification Keys
- Plant Materials Web Site
- Plant Materials Publications
- USDA Plant Hardiness Map



You are here: Home / Image Gallery / Profile Page / Large Image View of *Alliaria petiolata* (M. Bieb.) Cavara & Grande (garlic mustard)

## Image Gallery

### Photo and Download Link

*Alliaria petiolata* (M. Bieb.) Cavara & Grande - garlic mustard  
ALPE4

©Elaine Haug. Provided by Smithsonian Institution, Department of Botany, United States, VA, Woodbridge, Occoquan National Wildlife Refuge. [Usage Requirements](#). Any use of copyrighted images requires permission of the copyright holder.



© Elaine Haug

To download the original size of this image, click on the link below. [Usage Requirements](#). Any use of copyrighted images requires permission of the copyright holder.

[Download a high-resolution JPEG image of \*Alliaria petiolata\* \(635 KB\)](#)

**Search**

Name Search  
garlic mustard

Common Name

- State Search
- Advanced Search
- Search Help

**PLANTS Topics**

- Alternative Crops
- Characteristics
- Classification
- Cover Crops
- Culturally Significant
- Distribution Update
- Documentation
- Fact Sheets & Plant Guides
- Introduced, Invasive, and Noxious Plants
- Threatened & Endangered
- Wetland Indicator Status

**Image Gallery**

- 50,000+ Plant Images

**Download**

- Complete PLANTS Checklist
- State PLANTS Checklist
- Advanced Search Download
- Symbols for Unknown Plants
- NRCS State GSAT Lists
- NRCS State Plants Lists

**Related Tools**

- Crop Nutrient Tool
- Ecological Site Information System
- PLANTS Identification Keys
- Plant Materials Web Site
- Plant Materials Publications
- USDA Plant Hardiness Map